



SHPE

**Leading Hispanics in STEM
Since 1973**

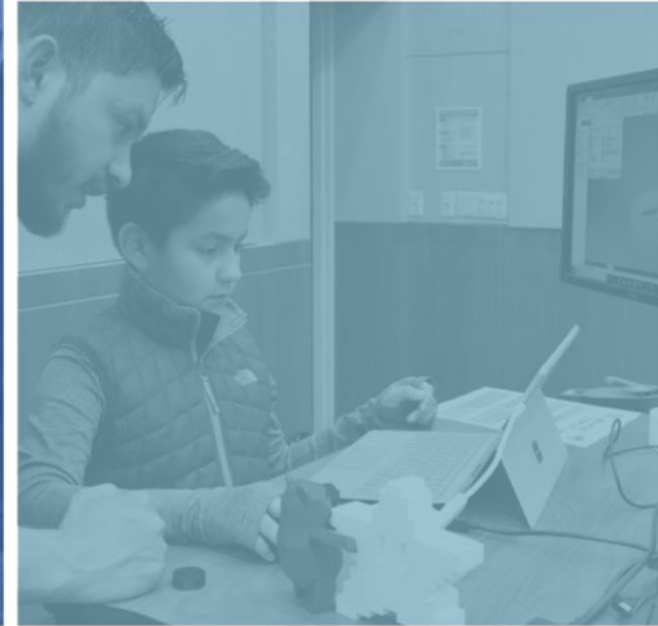




Table of Contents

A large group of diverse young adults, likely SHPE members, are posing for a group photo. They are standing in front of a large, illuminated orange SHPE logo that features a stylized flower or gear design. The group is smiling and looking towards the camera. Some individuals are wearing casual clothing like hoodies and t-shirts, while others are wearing more professional attire. The background is a dark wall with the large logo, and there are some posters or displays visible on the left side of the frame.

SHPE History	2-4
Chapter History	5
SHPE Colorado Board Member	6
SHPE's Core Values	7
SHPE Colorado Professional Chapter	8
Collaboration Opportunities	9
SHPE's National Impact	10
Support ERG Events	11-12
Professional Networking Events	13-16
High School Workshops	17-18
SHPE National Convention, Conferences & Regional Events	19-21
Chapter Sponsorship Benefits	22
Chapter Sponsorship Levels	23
Chapter Introductory Support	24



Introduction

Engineering has been in our Pre-Hispanic roots for hundreds of years. In Central America, the Aztecs and Mayans built large cities with the awe-inspiring pyramids. In South America, the Inca built cities and roads high in the mountains. On the Iberian Peninsula, Roman, Arabic, North African, and Spanish engineers-built aqueducts, churches, cities, and cathedrals. Today, SHPE carries on that legacy through its mission to change lives by empowering the Hispanic community and promoting science, technology, engineering, and math (STEM) awareness, access, support, and development.

This timeline traces the Society of Hispanic Professional Engineers (SHPE) history, from a dream to an internationally known and respected organization.

1973 Humble Beginnings

Frustrated by a lack of both career opportunities and professional support for Hispanic engineers, Rodrigo T. (Rod) Garcia, a member of the Los Angeles City Employees Chicano Association, held a meeting in his garage in East Los Angeles to discuss creating a new advocacy organization. The group discussed ways to boost minority representation in STEM and shared their vision for improving Hispanic employment prospects. The conversation that took place there inspired the founding of SHPE.



SHPE's original officers included (from left to right): Rodrigo Garcia, Americo Garza, George Esquer, Alex Vidaurrazga, and Andres Santamaria. Credit: SHPE Magazine

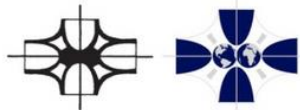


1974

SHPE is Formed

In 1974, SHPE was officially incorporated. It's first office listed was a post office box in Los Angeles. Rod Garcia served as the first president of the organization, which initially focused its efforts in Southern California.

Administrators, professors, and students at California State University, East Los Angeles College, and the University of Southern California founded SHPE's first collegiate chapters.



"Jose Gonzalez, an East Los Angeles artist, developed SHPE's first logo (left) in 1974. Two years later, SHPE unveiled an updated logo that clearly showed both hemispheres, highlighting the connected nature of the Hispanic World. Credit: SHPE

"We had a roster of all the engineers in California. And we went through it and picked out the Spanish surnames and sent them a solicitation. There were about 500 on the list, and we got 50 to join. That was the beginning."

Rod Garcia, SHPE Founder



Today, SHPE makes a big impact. We're the largest association in the nation for Hispanics in STEM. We strive to meet the needs of our students and professional members by offering effective training, mentorship, and programs for our vibrant community.

SHPE's growth isn't slowing down anytime soon. As we continue to expand our membership, programs, and partnerships, we're guided by a clear mission, a bright vision, and the core values demonstrated by our founders.



SHPE's Core Values



Mission

SHPE changes lives by empowering the Hispanic community to realize its fullest potential and to impact the world through STEM awareness, access, support, and development.

Vision

SHPE's vision is a world where Hispanics are highly valued and influential as the leading innovators, scientists, mathematicians, and engineers.

Values

Familia

We take responsibility for our collective strength and passion by developing communities, building a diverse and inclusive membership, and challenging each other to be our best.

Service

We act on a foundation of service. We commit to deliver the highest level of quality, integrity, and ethical behavior. We act with empathy, patience and understanding.

Education

We value formal education and professional development. We are dedicated to continuous improvement and renewal. We learn from successes, setbacks, and each other.

Resilience

We embrace our diverse cultures and communities, which enable us to adapt, thrive, and persist with optimism.

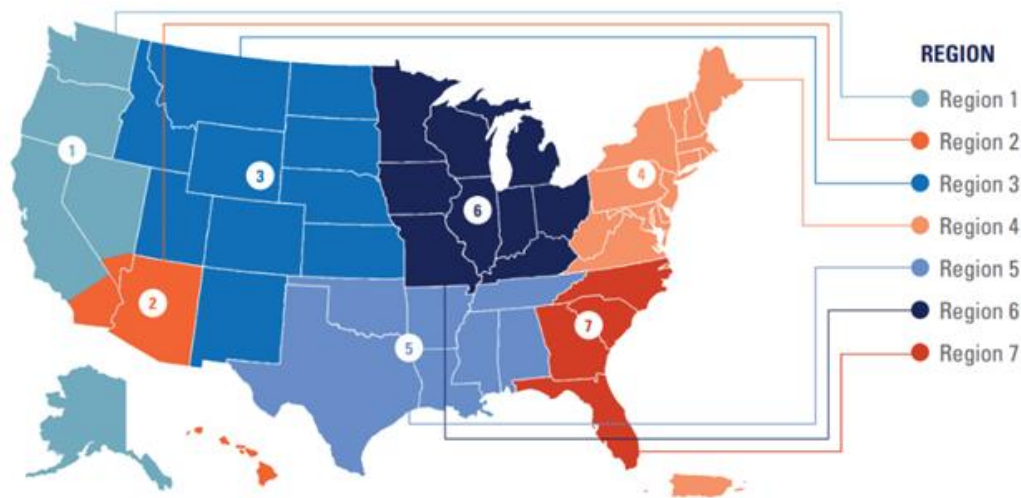


SHPE Colorado Chapter History

The SHPE Colorado Professional Chapter was founded in 1988. Since its inception, SHPE Colorado has awarded over \$50,000 in scholarships to over 50 aspiring young Hispanic engineers and scientists in Colorado.

SHPE Colorado has hosted the SHPE National Convention in 1995 and 2007. This conference attracts thousands of Hispanic engineers and scientists from across the nation to research and network about engineering and science strategies impacting global and local economies. Additionally, the SHPE Colorado Chapter was honored by the SHPE National Board of Directors as the 2004 Region 3 Professional Chapter of the Year. SHPE Colorado hosted RLDC twice recently, in 2017 at CU Denver and 2019 at CSU in Fort Collins.

The concept of networking and mentorship is a key basis for the SHPE Colorado organization. SHPE Colorado mentors seven student university chapters in Region 3.



SHPE University Chapters partnering with SHPE Colorado:

- Colorado State University (Fort Collins)
- University of Colorado at Boulder
- University of Colorado at Denver
- University of Wyoming at Laramie
- University of Denver
- Colorado School of Mines (Golden)
- Colorado Mesa University (Grand Junction)



Vision

SHPE Colorado is a network of mentors, role models, and leaders in STEM dedicated to promoting professional development and career opportunities, encouraging students to excel and pursue STEM careers, and supporting local chapter organizations in the greater Colorado community.

Statement of Values

We are brought together by heritage, social responsibility, and desire to improve the equality of all people through the use of science and technology. We value excellence in education, professional pursuits, and leadership. We obtain excellence through integrity, empowerment, achievement, diversity, and continuous improvement.

Mission

SHPE Colorado endeavors to:

- Promote the advancement of Hispanic professionals in careers, education, economic, and social welfare.
- Develop and participate in programs with industry and educational institutions that benefit professionals and students pursuing careers in STEM.
- Provide members with opportunities to expand their career abilities through workshops and conferences.
- Support SHPE Student Chapter activities and promote expansion in our area.



SHPE Colorado Executive Board 2023-2024

MEET *the* TEAM



Dante Barragan
President



Annamarie Valdez
VP of Finance



Deni Avelar
VP of Operations



Julia Paez
VP of Corporate
Relations



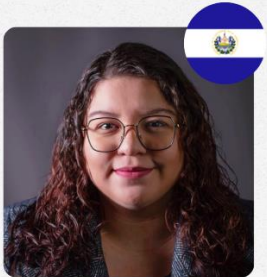
Bernardo Gonzalez
VP of Professional
Development



Michelle Falcon
VP of Membership



Jesus Flores Guerra
Social Media
Officer



Keren Quinteros
VP of Social Media



Gabriel Paez
VP of Student
Relations



Wendy Sanabria
VP of
Communications



Luis Monterrosa
VP of Compliance



Fernando Molina
VP of Marketing



Carlos Ibarra
Corporate
Relations Officer



Herman Colato
Webmaster



SHPE Colorado Impact



SHPE Colorado Impact

SHPE Colorado Professional Chapter has an average monthly reach of over 2,000 engineering professionals throughout the State of Colorado via email and social media campaigns.

SHPE National Impact

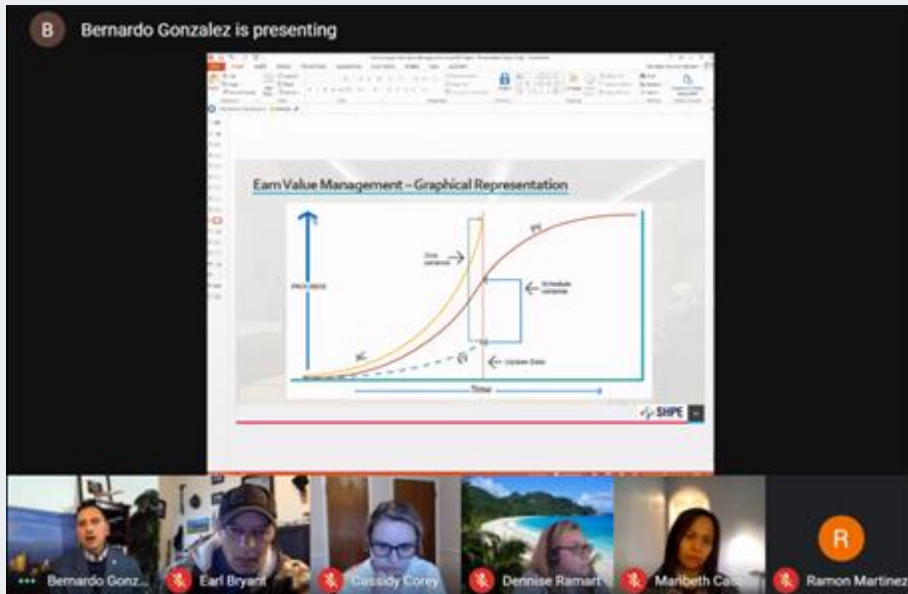
- 13,000+ members
- 10,000+ annual event attendees
- 286 student & professional chapters
- 260 sponsors & partners



Collaboration Opportunities

Professional Development Events

Our Professional Development workshops are aimed to provide continuous improvement to our members not only with professional skills but also leadership development. The chapter's goal is to prepare future leaders in their field and the community. In more recent years, SHPE CO hosted a workshop about Project Management Professional (PMP) Certification.



Professional Development Workshops in Partnership with Guest Speakers

SHPE Colorado regularly partners with speakers from other corporations and organizations to cover a wide range of relevant topics in person or virtual settings, such as:

- Networking & Building a Personal Brand
- How to Defeat Imposter Syndrome & Command Executive Presence
- Professional Online Presence Tips
- Professional Confidence Across Job
- Risk Management
- Foundations of Investing
- Growth & Leadership at the Workplace
- What Does a Professional LinkedIn Profile Look Like?
- ... and many more.



Partnerships with ERGs

SHPE Colorado regularly attends local Employee Resource Group (ERG) events when an invitation is extended.





Company Tour Visits for Students and Professionals

SHPE Colorado has coordinated company tours, info sessions, and workshops, for both students and professionals that are interested in learning more about the STEM fields and opportunities with specific corporations.





Professional Networking Events

Our Professional Networking mixers provide our members, sponsors, and interested invitees an opportunity to expand and maintain existing relationships. For our members, this is an opportunity to interact with corporate representatives (sponsors) in an informal cocktail setting.

Annual Posada Navideña



The Annual Posada Navideña is a family event that started in 2018. It occurs every year in December, and it is co-hosted by SHPE Colorado and its sister non-profit organization Prospanica Denver. Each year, several companies are invited to participate as well as their Employee Resource Groups (ERGs).



Hiking Activities

Many SHPE Colorado members are avid hikers. We have planned hiking events during summer and fall.





Social Events

SHPE Colorado members like to have fun! We plan social events every month to connect with old and new friends, as well as support local businesses. Previous events have included dinners, bowling, salsa dancing, BBQ at the park, and happy hours (in person and virtual).





National Hispanic Heritage Month Celebration

SHPE Colorado joins other organizations and companies each year to observe National Hispanic Heritage Month from September 15 to October 15, and celebrates the histories, cultures, and contributions of American citizens whose ancestors came from Spain, Mexico, the Caribbean, and Central and South America.





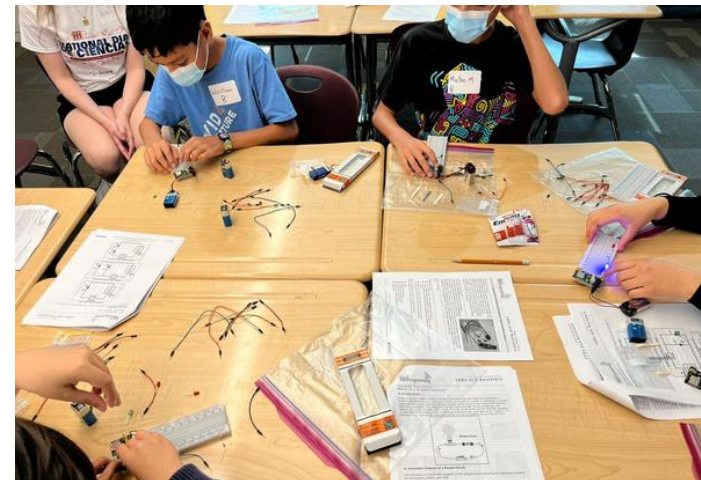
K-12 STEM Outreach Workshops

Noche de Ciencias™ (Night of Sciences)

Noche de Ciencias™ events engage and inspire Hispanic youth to pursue STEM degrees and careers and ultimately advance SHPE's mission and vision. Furthermore, Night of Sciences includes information sessions for parents to get informed about financial aid and how to support their student succeed in college.

Noche de Ciencias™ programming is aligned with impactful STEM after-school programs that yield STEM specific benefits, such as pursuing STEM education and career paths later in life. Noche de Ciencias™ objectives are grouped into three (3) main categories:

1) STEM Awareness and Interest: I KNOW STEM. Increase students' awareness of and interest in STEM so that they can properly identify the different degrees, careers, and industries within the STEM field.





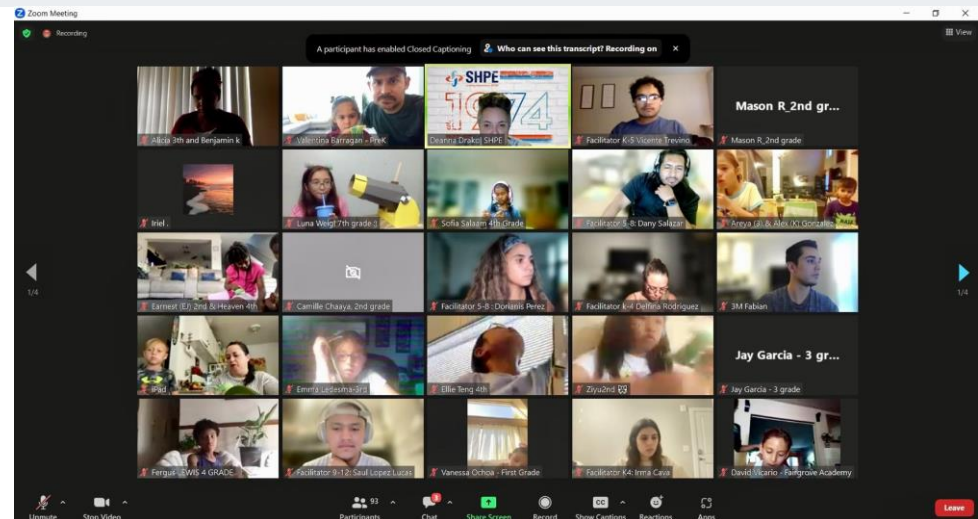
K-12 STEM Outreach Workshops



2) Self-efficacy in STEM: I CAN DO STEM. Empower and strengthen students' self-confidence in pursuing and achieving STEM degrees and careers.

3) Self-identity in STEM: I AM STEM. Provide students opportunities to think and act as STEM professionals.

These objectives are accomplished through interactive STEM activities, networking opportunities, and sharing information on SHPE, as well as, by helping parents understand STEM opportunities through bilingual parent workshops.





Pre-College Workshops

Pre-College Workshops



The pre-college workshops focus on providing our local high schools with the interactive and informative sessions on various STEM and college preparation topics. The end goal is to introduce SHPE Junior Chapters within each institution. Each event provides dinner for all volunteers and students.

The Pre-College workshops likewise can include spaces for parents to participate and learn about the college application process providing best support and guidance for their student's entrance into higher education.



SHPE National Convention & Regional Conferences

Because our members deserve the best, SHPE is always putting on cutting-edge events. Our national events draw thousands of students and professionals! At Convention alone, you'll find Pre-College, Academic, SHPEtinas, and Tech & Innovation conference tracks for students! And our local events are a great way to connect with SHPE members in Colorado.

SHPE National Convention

The SHPE National Convention serves as the country's largest, annual gathering of Hispanic STEM students and professionals. The convention is made up of five distinct conferences and has something for everyone: Pre-college, Academic, SHPEtinas, SHPETech, and Professionals in STEM. Beyond the educational workshops there are competitions, networking events, and the popular Career Fair & Graduate School Expo. Benefits of attending include:

- 100+ hours of cutting-edge content curated for Hispanics in STEM
- 200+ world-class companies and universities recruiting
- 1,000+ interviews and dream jobs offered
- 10,000+ people to add to your network
- Infinite impact on your life and career





National Institute for Leadership Advancement (NILA)



This conference convenes newly elected chapter leaders from SHPE's undergraduate and professional chapters, offering leadership, community engagement, and mentorship skills training through workshops, lectures, individual and team exercises, hands-on activities, and small group breakout sessions. All attendees receive the Certified Chapter Leader certificate upon program completion.





Chapter Sponsorship Benefits


As a SHPE Colorado partner, you will access the following benefits:

- Listed as sponsor in SHPE Colorado publications: newsletter, flyers, website, social media, programs, etc.
- Access professional targeted events:
 - Professional development events
 - Professional networking events
 - Hispanic Heritage Month Celebration event
 - Leadership & Success Panel
- Annual Posada Navideña
- Featured in signature events
- Membership engagement
- Access to top Hispanic students and experienced professionals
- Increased visibility through email blasts with our membership distribution
- Marketing and positive brand recognition opportunities in key events
- Participation as speakers in key events
- Public relations and social responsibility via community involvement
- Use job listing services at local level
- Customized recruitment events
- Scholarship naming opportunities
- ...among others






Sponsorship Levels

 SHPE <small>Leading Hispanics in STEM</small> Colorado Professional	Main Sponsorship Levels			
	Platinum Partner (\$5,000)	Gold Partner (\$4,000)	Silver Partner (\$3,000)	Bronze Partner (\$2,000)
Branding & Marketing				
Company name/logo/link on all marketing materials: SHPE Colorado website, newsletter, social media, flyers, programs, etc.	✓ Name/logo/link	✓ Name/logo/link	✓ Name/logo	✓ Name/logo
Featured in SHPE Colorado signature events such as: Leadership & Success Panel, Hispanic Heritage Month Celebration, Noche de Ciencias™, Noche Navideña, etc.	✓	✓	✓	✓
Host high-profile professional development or networking event	✓ (Host)	✓ (Co-host)	-	-
Marketing outreach support to SHPE Colorado community for exclusive events	✓ (2 events)	✓ (1 event)	-	-
Engagement & Development				
SHPE Professional level 1-year memberships	✓ (4)	✓ (3)	✓ (2)	✓ (1)
SHPE Student 1-year memberships for local Colorado academic partners or interns	✓ (3)	✓ (2)	✓ (1)	-
Opportunity to collaborate on a pre-college event	✓ (1)	✓ (1)	-	-
Speaking opportunity at SHPE Colorado event	✓ (2)	✓ (1)	-	-
Admission to targeted SHPE events	✓ (4)	✓ (3)	✓ (2)	✓ (1)
\$500 SHPE Colorado Scholarship Sponsorship	✓	-	-	-
Recruitment				
Career opportunity advertisement*, job posting * and local promotions	✓ (3) 60-day enhanced posting + job flash	✓ (2) 60-day posting	✓ (1) 30-day posting	✓ (1) 15-day posting

* Posting does not guarantee a candidate placement
 (#) highlights the quantity provided



Introductory Support Levels

 SHPE <small>Leading Hispanics in STEM</small>	Introductory Support Levels	
	Colorado Professional	Website, Mailbox, Domain Supporter (\$1,000)
Branding & Marketing		
Company name/logo/link on all marketing materials: SHPE Colorado website, newsletter, social media, flyers, programs, etc.	✓ Name/logo	✓ Name/logo
Featured in SHPE Colorado signature events such as: Leadership & Success Panel, Hispanic Heritage Month Celebration, Noche de Ciencias, Noche Navideña, etc.	✓	-
Host high-profile professional development or networking event	-	-
Marketing outreach support to SHPE Colorado community for exclusive events	-	-
Engagement & Development		
SHPE Professional level 1-year memberships	✓ (1)	✓ (1)
SHPE Student 1-year memberships for local Colorado academic partners or interns	-	-
Opportunity to collaborate on a pre-college event	-	-
Speaking opportunity at SHPE Colorado event	-	-
Admission to targeted SHPE events	✓ (1)	✓ (1)
\$500 SHPE Colorado Scholarship Sponsorship	-	-
Recruitment		
Career opportunity advertisement *, job posting * and local promotions	-	-

* Posting does not guarantee a candidate placement
 (#) highlights the quantity provided



Corporate Response Form

Corporate Response Form

Company Name: _____

This name will be used on all printed and marketing materials.

Contact Person: _____

Title: _____

Mailing Address: _____

Phone: (____) ____-____ Fax: (____) ____-____ Email: _____

Please indicate one or more of the following forms of sponsorship:

Support for SHPE Colorado Professional is for the fiscal year ending on June 30, 2024

Official partner of the SHPE Colorado Professional Chapter

Platinum Partner (\$5,000) Silver Partner (\$3,000) Website, Mailbox, Domain Supporter (\$1,000)

Gold Partner (\$4,000) Bronze Partner (\$2,000) Academic Supporter (\$500+)

Support a specific event and/or program

Noche de Ciencias (\$750) Networking Event (\$500) STEM Education Workshop (\$500)

Pre-College Workshops (\$350) Professional Development Workshops (\$300)

National Conference (\$500) National Institute for Leadership Advancement (\$750)

Signature _____

Date _____

Payment should be made payable to:
SHPE Colorado Professional Chapter
Attn: Annamarie Valdez
P.O. Box 850 Firestone, CO 80520-0850

Cash/Check Payments

SHPE Colorado Professional Chapter
Attn: Annamarie Valdez
P.O. Box 850 Firestone, CO 80520-0850

Card/ Digital Payments

Email: vpfinance@shpecolorado.org
for next steps & payment options

To access the Corporate Response Form, please click [here](#).

From the SHPE Colorado Chapter,



Thank you!